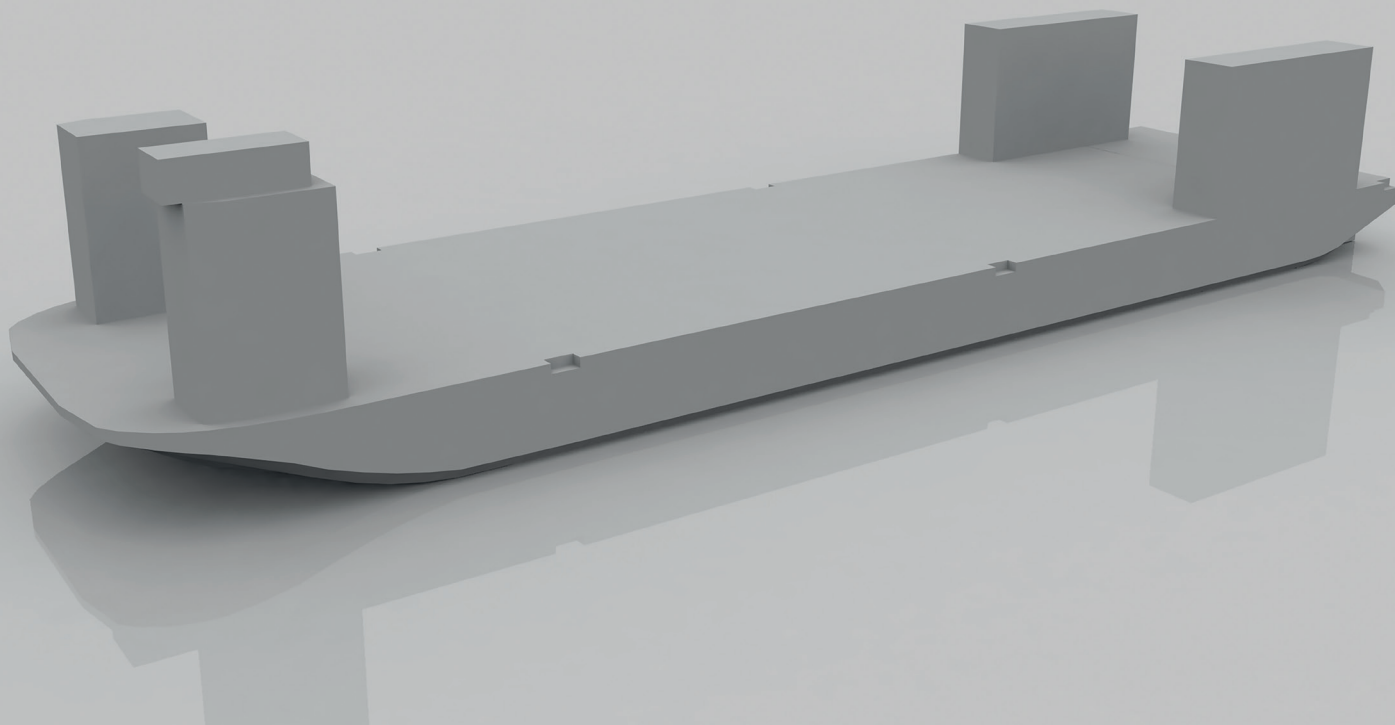




NAME: (TBC)

137 x 36.58m Semi Submersible Barge



Main details

Names:	TBC
Class:	LR
Built:	China 2010
Registry:	Valletta, Malta
Official N:	9557733
GT:	10,449 tonnes
NT:	3,135 tonnes

Technical Details

Length Overall:	137.0m
Beam:	36.6m
Depth:	7.6m
Max draught:	5.8m
Dwt on max draught:	21,806 tonnes
Deck area:	4,200m ²
Frame spacing:	2,500mm
Deck loading:	20 tonnes per sq meter
Point loads:	Up to 750 tonnes

Equipment

Ballast pumps:	2 Hamworthy pumps with max rated capacity of 1,000m ³ /hour each
Machinery:	2 Caterpillar engines each of 480 hp

Ballast System

Valves are hydraulically operated from control room with pumps
Ballasting and deballasting is effected using the pumps

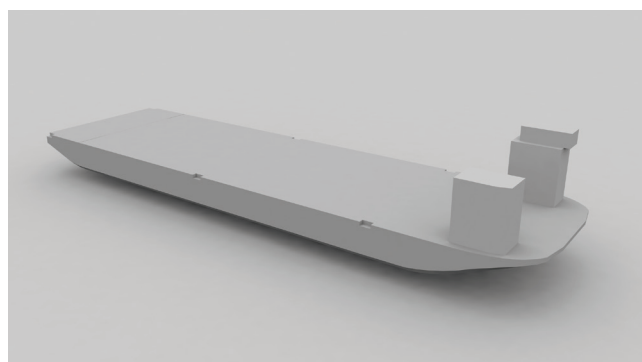
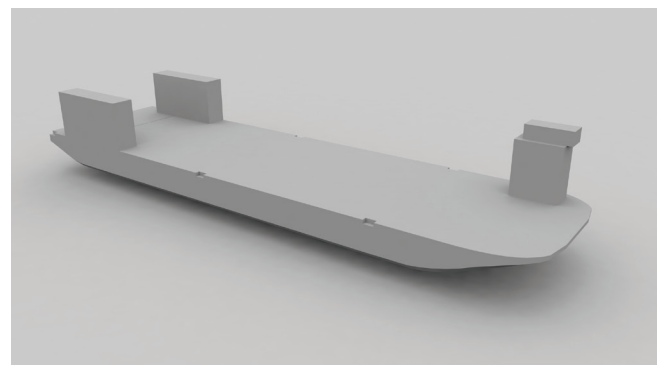
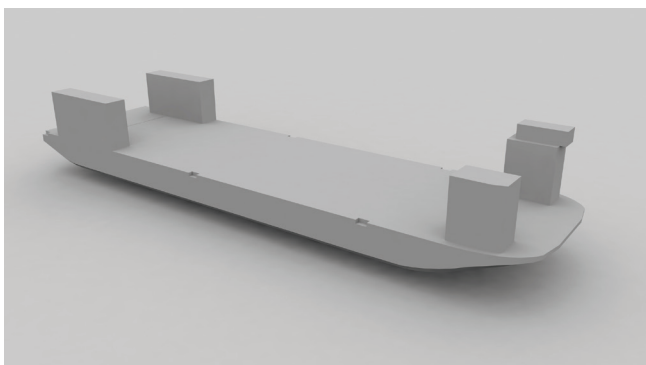
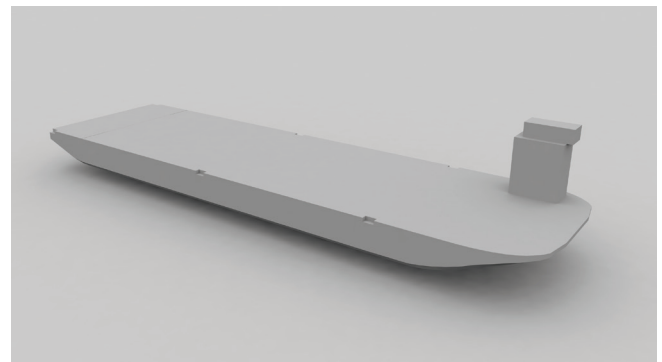
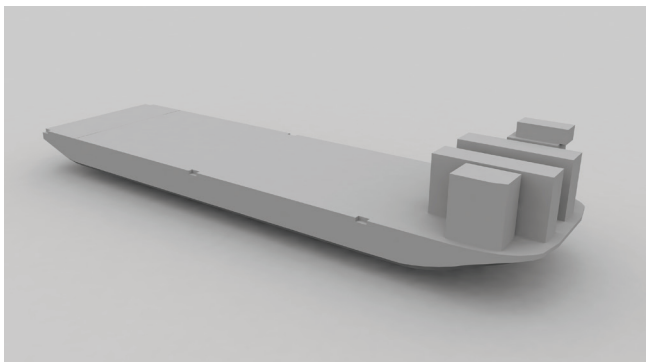
Submersion

Barge can be submersed to a maximum of 10m over main deck forward and aft.

Mooring system

1 anchor windlass with bow anchor of 3.5 tonnes

+44 (0)141 221 3075
+ 356 20 92 89 42
barge@augusteamalin.com



Malin Group

© 2020 Malin Group Ltd. All Rights Reserved. Issue 1.0