

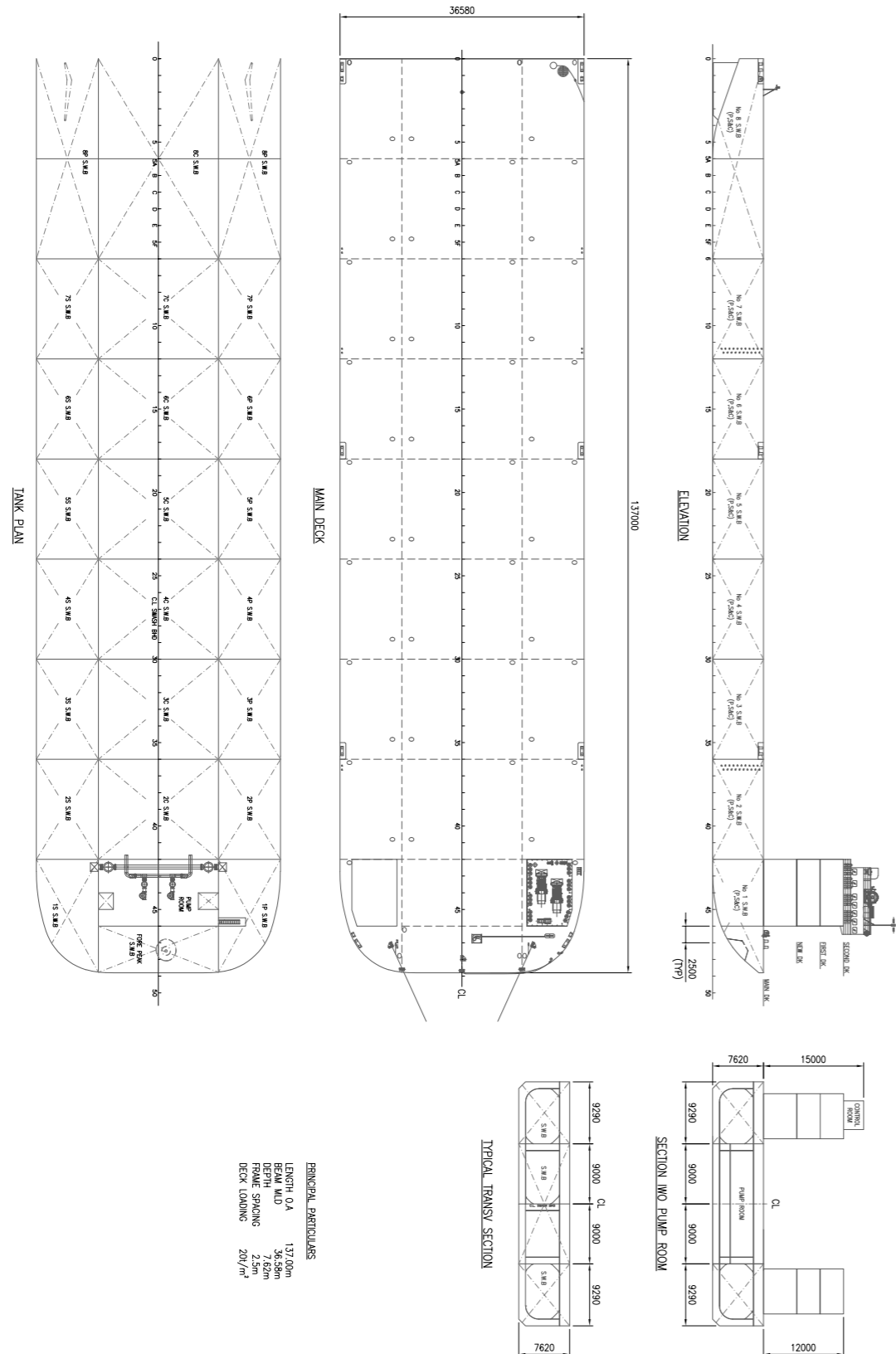
MALIN AUGUSTEA

NAME: CD01

137 x 36.58m Semi Submersible Barge



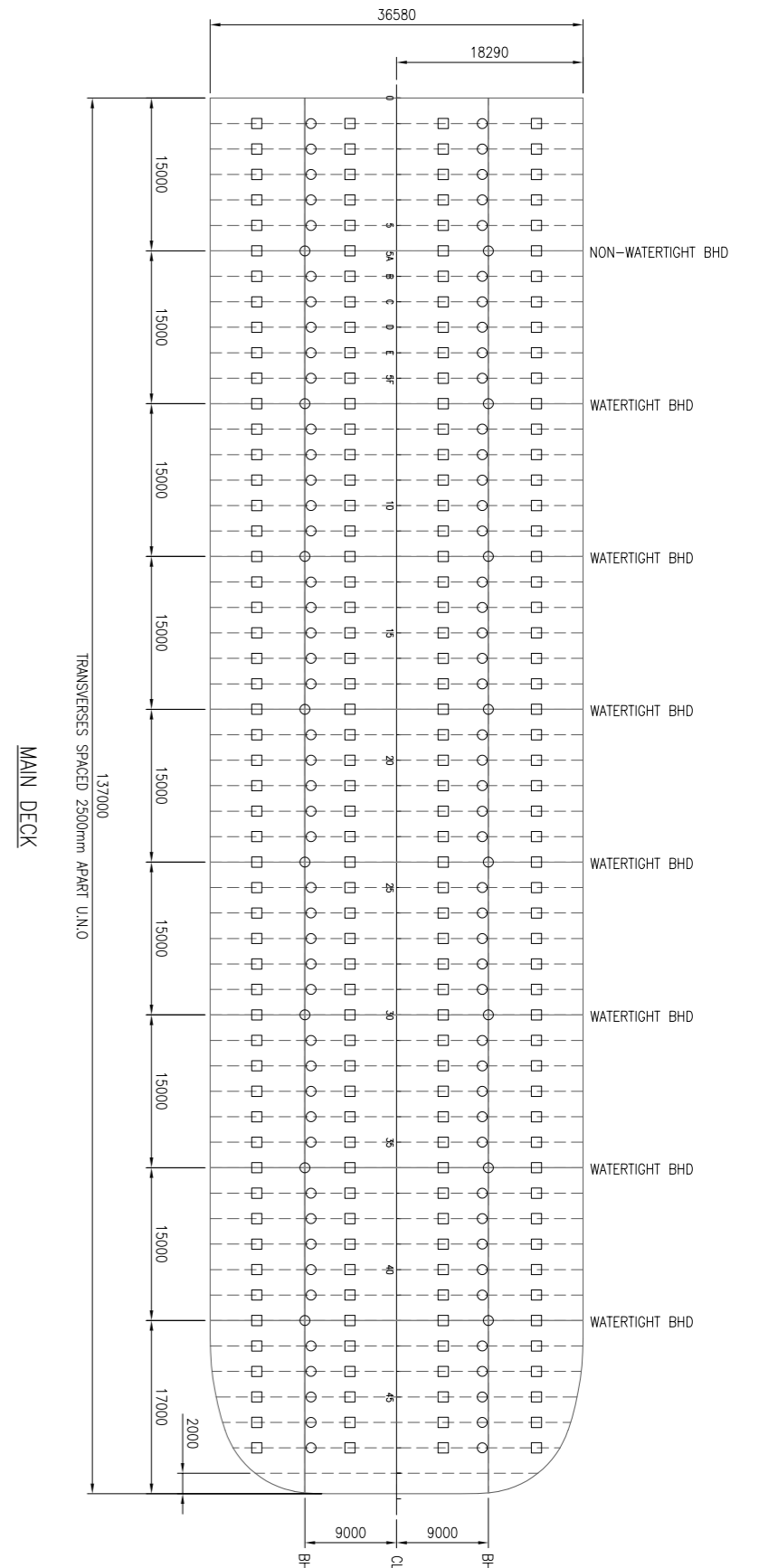
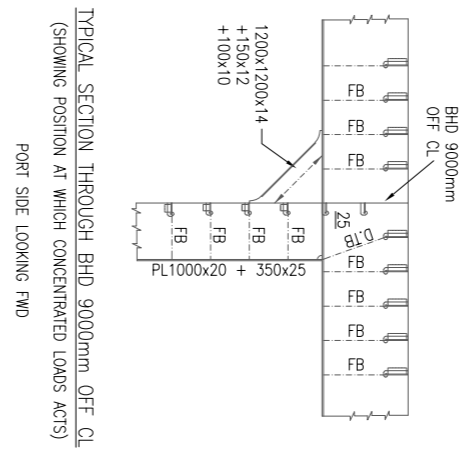
General Arrangement



Allowable Deck Loadings

UNIFORM DECK CARGO LOADING = 20 TONNES/M²

SYMBOL	CONC. LOADING ON DECK TRANSVERSES & BHDS
□	250 TONNES (OVER 1m x 1m)
○	CONCENTRATED LOADING AT CRUCIFORM OF OUTBOARD LONGITUDINAL BULKHEAD WITH DECK TRANSVERSE OR TRANSVERSE BULKHEAD : - A) AT ALTERNATE CRUCIFORMS SIMULTANEOUSLY 500 TONNES B) AT EACH CRUCIFORMS SIMULTANEOUSLY 750 TONNES LOADS TO BEAR UNIFORMLY IN A TRANSVERSE DIRECTION 2m EACH SIDE OF NO.11 DECK LONGITUDINAL (ON THE TRANSVERSE) AND IN A FORE AND AFT DIRECTION, 1.25m EACH SIDE OF THE TRANSVERSE/TRANSVERSE BULKHEAD (ON THE LONGITUDINAL BULKHEAD).



Main details

Name:	CD01
Class:	LR
Built:	China 2010
Registry:	Glasgow, UK
Official N:	9557733
GT:	10,449 tonnes
NT:	3,135 tonnes

Technical Details

Length Overall:	137.0m
Beam:	36.6m
Depth:	7.6m
Max draught:	5.8m
Dwt on max draught:	21,806 tonnes
Deck area:	4,200m ²
Frame spacing:	2,500mm
Deck loading:	20 tonnes per sq meter
Point loads:	Up to 750 tonnes

Equipment

Ballast pumps:	2 Hamworthy pumps with max rated capacity of 1,000m ³ /hour each
Machinery:	2 Caterpillar engines each of 480 hp

Ballast System

Valves are hydraulically operated from control room with pumps
Ballasting and deballasting is effected using the pumps

Submersion

Barge can be submerged to a maximum of 12m over main deck forward and aft.

Mooring system

1 anchor windlass with bow anchor of 3.5 tonnes

+44 (0)141 221 3075

+ 356 20 92 89 42

barge@malinaugustea.com

malinaugustea.com



Malin Group

© 2021 Malin Group Ltd. All Rights Reserved. Issue 1.0